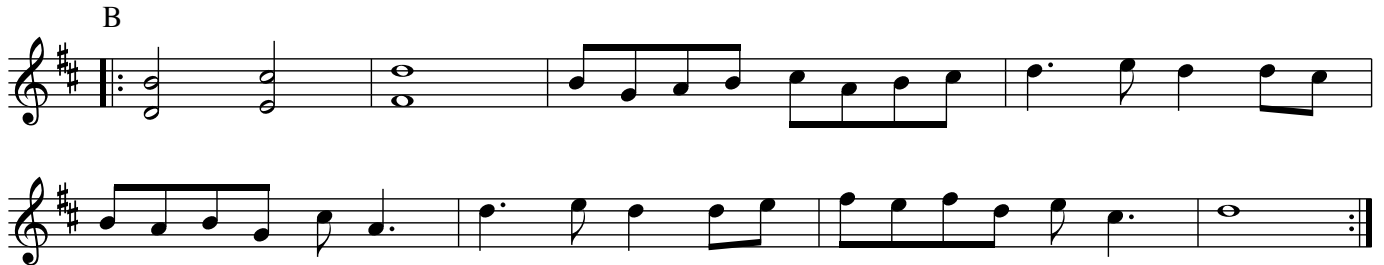
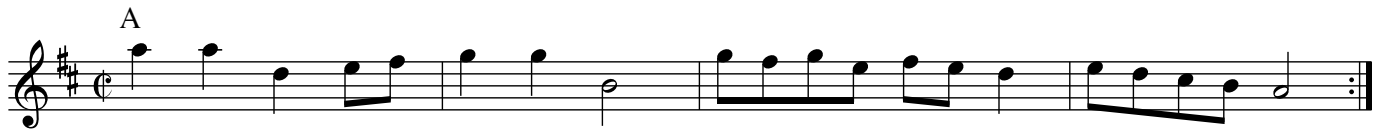


Still House

Trad arr © Ben Paley 2011



Notes: The second part of Still House begins with a two–bar phrase played three times.
In this transcription I've written the phrase in three different ways to suggest some of the possibilities for variation.

History: My father, Tom Paley, plays a version of this tune with a less unusual second part, which also has lyrics.
I learnt this version from banjo player Dan Stewart.

Red Fox

Trad arr © Ben Paley 2011

Part A of the musical score for 'Red Fox'. It consists of two staves of music in treble clef, key of D major, and common time. The melody begins with a quarter rest, followed by a sequence of eighth and quarter notes: D4, E4, F#4, G4, A4, B4, C5, B4, A4, G4, F#4, E4. The piece concludes with a double bar line and repeat dots.

Part B of the musical score for 'Red Fox'. It consists of three staves of music in treble clef, key of D major, and common time. The first staff begins with a repeat sign and contains a two-measure phrase: a quarter note D4, followed by a quarter note E4. This phrase is repeated three times. The second staff continues the melody with eighth and quarter notes: F#4, G4, A4, B4, C5, B4, A4, G4, F#4, E4, D4. The third staff concludes the piece with a double bar line and repeat dots.

History: This is another tune I learnt from Dan Stewart.

Säckpiplåt

Trad arr © Ben Paley 2011

A

Musical notation for section A, measures 1-8. The music is in 2/4 time, key of D major (one sharp), and consists of four staves. The first staff begins with a treble clef, a key signature of one sharp (F#), and a 2/4 time signature. The melody starts with a quarter note G4, followed by a quarter note A4, and a repeat sign. The second staff continues the melody with quarter notes B4, C5, B4, A4, G4, F#4, E4, and D4. The third staff continues with quarter notes C4, B3, A3, G3, F#3, E3, D3, and C3. The fourth staff concludes the section with a first ending (marked '1') and a second ending (marked '2'). The first ending consists of quarter notes G4, A4, B4, and C5. The second ending consists of quarter notes B4, A4, G4, and F#4, followed by a repeat sign and a final quarter note G4.

B

Musical notation for section B, measures 9-16. The music is in 2/4 time, key of D major (one sharp), and consists of four staves. The first staff begins with a treble clef, a key signature of one sharp (F#), and a 2/4 time signature. The melody starts with a quarter note G4, followed by a quarter note A4, and a repeat sign. The second staff continues the melody with quarter notes B4, C5, B4, A4, G4, F#4, E4, and D4. The third staff continues with quarter notes C4, B3, A3, G3, F#3, E3, D3, and C3. The fourth staff concludes the section with a first ending (marked '1') and a second ending (marked '2'). The first ending consists of quarter notes G4, A4, B4, and C5. The second ending consists of quarter notes B4, A4, G4, and F#4, followed by a repeat sign and a final quarter note G4.